

MANITOU 160ATJ

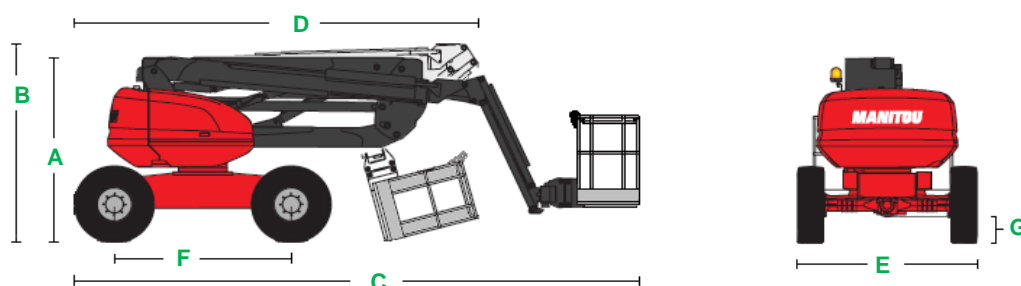


MEASUREMENTS		METRIC	IMPERIAL
Working height maximum*		16.01 m	52 ft 6 in
Platform height maximum		14.01 m	46 ft
Articulation height		7.38 m	24 ft 3 in
Outreach		8.30 m	27 ft 3 in
Platform dimensions (length x width)		0.80 m x 1.80 m	2 ft 7 in x 6 ft
A	Height	2.37 m	7 ft 9 in
B	Height - when folded	2.61 m	8 ft 7 in
C	Length	6.53 m	21 ft 5 in
D	Length - when folded	4.44 m	14 ft 7 in
E	Width	2.30 m	7 ft 7 in
F	Wheelbase	2.20 m	7 ft 3 in
G	Ground clearance - centre	35.5 cm	1 ft 2 in
	Ground clearance - axle	26 cm	10 in

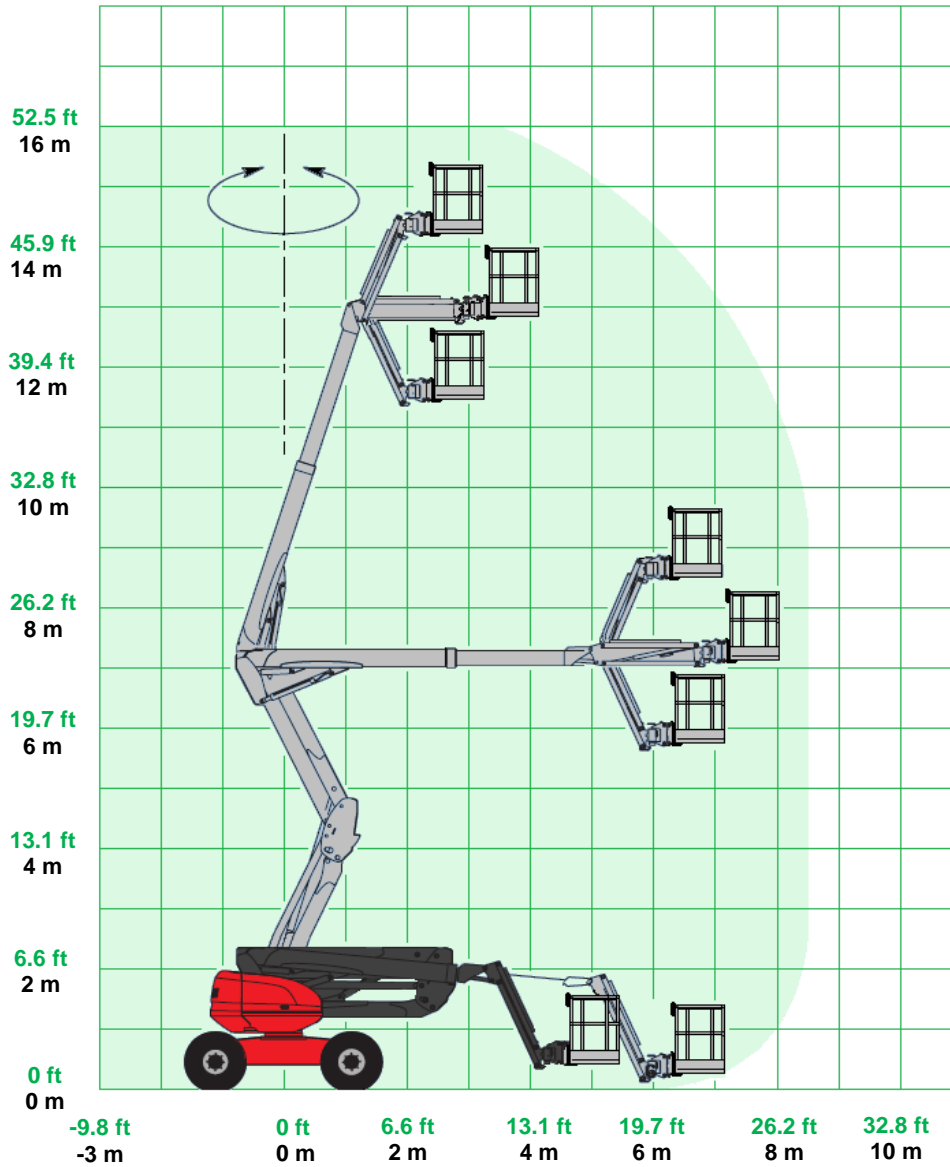
PRODUCTIVITY		
Platform capacity	230 kg	507 lb
Maximum number of persons	2	2
Maximum wind speed (12.5 m/s)	45 km/h	28 mph
Platform rotation	+90° / -90°	+90° / -90°
Turret rotation	355°	355°
Jib tilting	+70° / -70°	+70° / -70°
Drive speed - stowed	6 km/h	3.72 mph
Drive speed - booms raised	0.80 km/h	0.49 mph
Gradeability**	40%	21.80°
Maximum tilt	9%	5°
Inside turning circle	1.39 m	4 ft 7 in
Outside turning circle	3.71 m	12 ft 2 in
Basket turning radius	5.94 m	19 ft 6 in
Controls	proportional	proportional
Drive	four wheel - crab	four wheel - crab
Tyres - foam-filled RT lug	33x12-20	33x12-20
Wheel load maximum***	3,800 kg	8,377 lb
Contact surface on the ground (hard / soft ground)***	325 / 602 cm ²	-
Surface punch-through (hard / soft ground)***	11.50 / 6.21 daN/cm ²	-

POWER		
Power source	Kubota 4 cylinder diesel 26 kW (35 hp)	
Fuel tank capacity	52 L	13 gal lqd

WEIGHT****		
	6,160 kg	13,580 lb



MANITOU 160ATJ RANGE OF MOTION



*The metric equivalent of working height adds 2 m to platform height. Imperial adds 6 ft to platform height.

**Gradeability applies to driving on slopes. See operator's manual for details regarding slope rating.

***Floor loading information is approximate. It should be used only with adequate safety factors.

****Weight will vary depending on options.