

MANITOU 120AETJ-C 3D

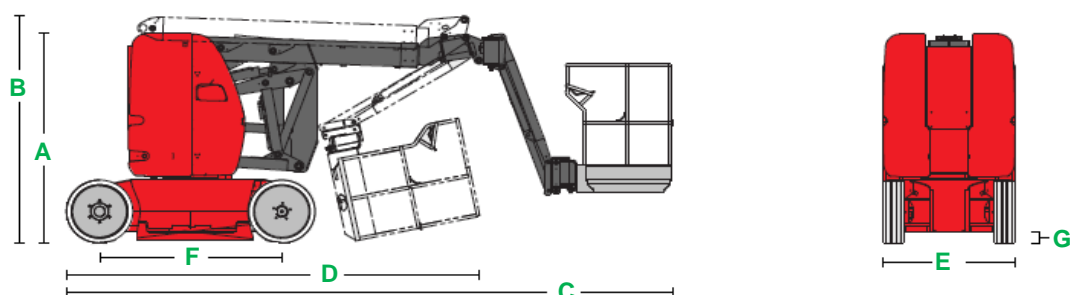


| MEASUREMENTS | | METRIC | IMPERIAL |
|--------------------------------------|---------------------------|-----------------|-------------|
| Working height maximum* | | 11.95 m | 39 ft 2 in |
| Platform height maximum | | 9.95 m | 32 ft 8 in |
| Articulation height | | 4.77 m | 15 ft 8 in |
| Outreach | | 7 m | 22 ft 12 in |
| Platform dimensions (length x width) | | 0.92 m x 1.20 m | 3 ft x 4 ft |
| A | Height | 1.99 m | 6 ft 6 in |
| B | Height - when folded | 2.16 m | 7 ft |
| C | Length | 5.48 m | 17 ft 12 in |
| D | Length - when folded | 3.74 m | 12 ft 3 in |
| E | Width | 1.20 m | 4 ft |
| F | Wheelbase | 1.65 m | 5 ft 5 in |
| G | Ground clearance - centre | 10 cm | 4 in |

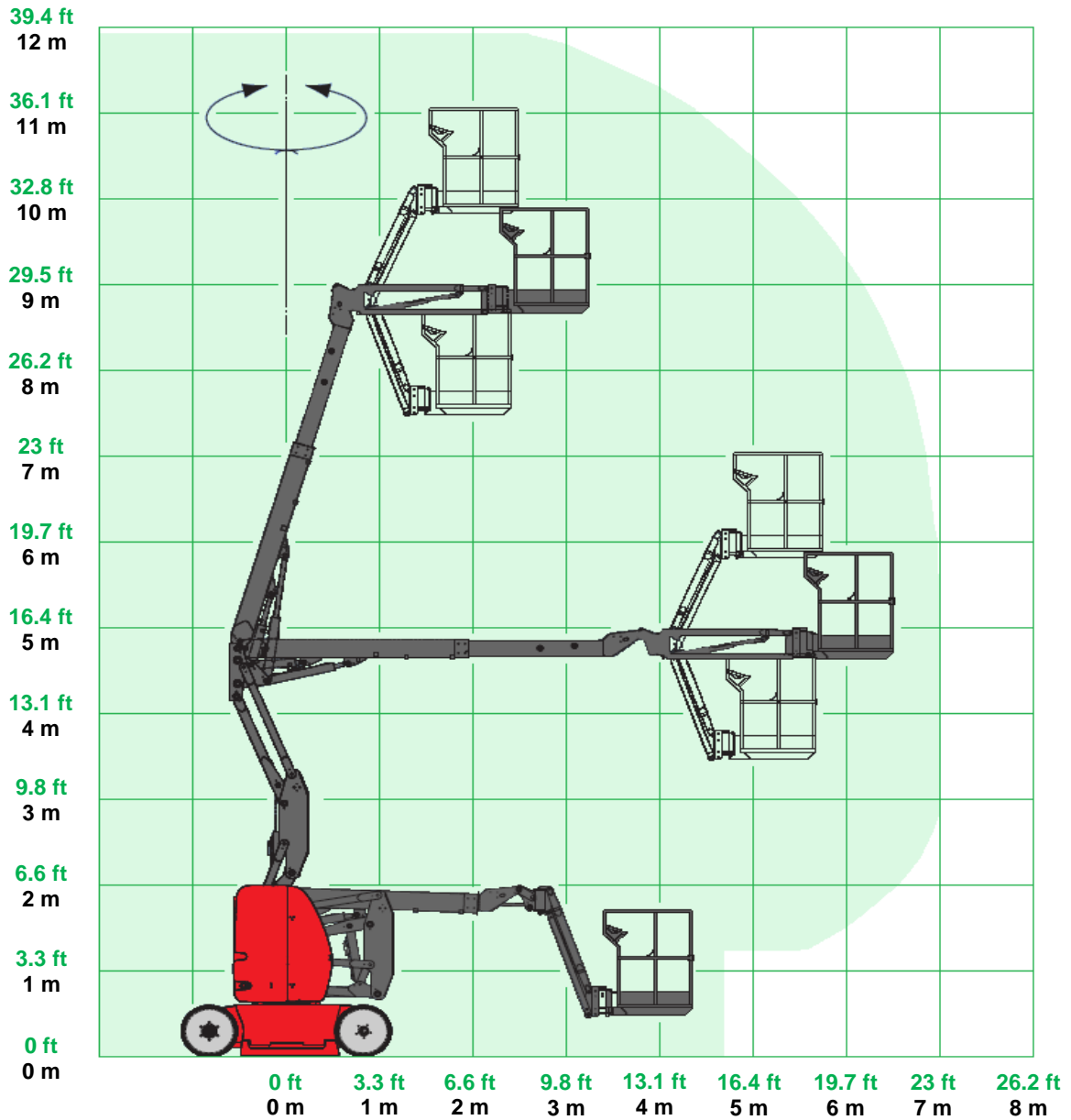
| PRODUCTIVITY | | |
|--|------------------------|--------------|
| Platform capacity | 200 kg | 440 lb |
| Maximum number of persons - indoor / outdoor use | 2 / 0 | 2 / 0 |
| Turret rotation | 355° | 355° |
| Basket rotation | 140° | 140° |
| Jib tilting | +70° / -70° | +70° / -70° |
| Drive speed - stowed | 6 km/h | 3.72 mph |
| Drive speed - booms raised | 0.60 km/h | 0.37 mph |
| Gradeability - stowed** | 25% | 14.04° |
| Maximum tilt | 5% | 3° |
| Inside turning radius | 1.55 m | 5 ft |
| Outside turning radius | 3.44 m | 11 ft 3 in |
| Controls | proportional | proportional |
| Tyres - non-marking | 60 x 19 cm | 23 x 7 in |
| Driving wheels | 2 (back) | 2 (back) |
| Steering / directional wheels | 2 (front) | 2 (front) |
| Wheel load maximum*** | 4,200 kg | 9,270 lb |
| Resting surface of one wheel on the ground*** | 212 cm ² | - |
| Piercing*** | 20 daN/cm ² | - |

| POWER | |
|--------------|---------------------------|
| Power source | 2 x 24 V 240 Ah batteries |

| WEIGHT**** | |
|------------|--------------------|
| | 6,550 kg 14,440 lb |



MANITOU 120AETJ-C 3D RANGE OF MOTION



*The metric equivalent of working height adds 2 m to platform height. Imperial adds 6 ft to platform height.

**Gradeability applies to driving on slopes. See operator's manual for details regarding slope rating.

***Floor loading information is approximate. It should be used only with adequate safety factors.

****Weight will vary depending on options.