

## JLG 450AJ SII

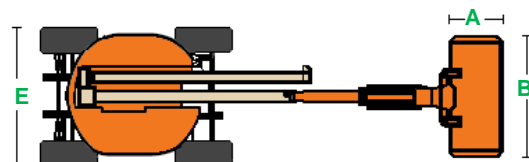
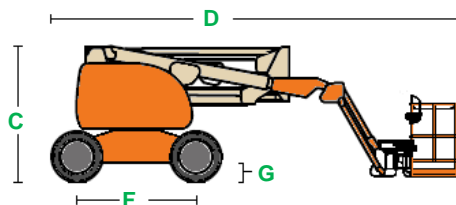


MEASUREMENTS		METRIC	IMPERIAL
Working height maximum*		15.72 m	51 ft 7 in
Platform height maximum		13.72 m	45 ft
Horizontal reach maximum		7.47 m	24 ft 6 in
Up and over clearance maximum		7.57 m	24 ft 10 in
<b>A x B</b>	Platform dimensions (length x width)	0.76 m x 1.83 m	2 ft 6 in x 6 ft
Overall jib length		1.24 m	4 ft 1 in
<b>C</b>	Height - stowed	2.30 m	7 ft 7 in
<b>D</b>	Length - stowed	6.71 m	22 ft
<b>E</b>	Width	2.10 m	6 ft 11 in
<b>F</b>	Wheelbase	2.34 m	7 ft 8 in
<b>G</b>	Ground clearance - centre	29 cm	11 in

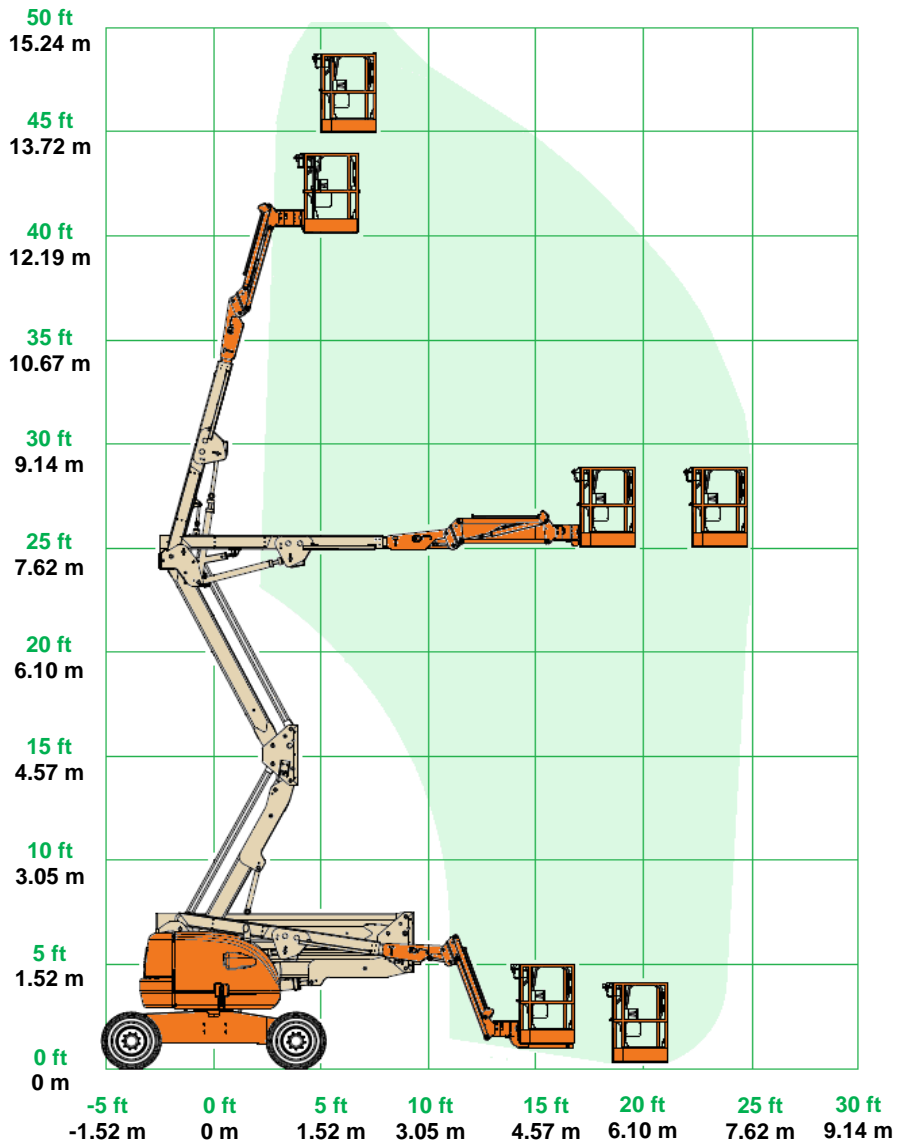
PRODUCTIVITY		
Platform capacity	227 kg	500 lb
Maximum number of persons	2	2
Maximum wind speed (12.5 m/s)	45 km/h	28 mph
Platform rotation	180° hydraulic	180° hydraulic
Turntable rotation	360° non-continuous	360° non-continuous
Turntable tailswing	zero	zero
Continuous slew	no	no
Jib raise angle	74°	74°
Jib lower angle	70°	70°
Jib articulation range	144° (+74°, -70°)	144° (+74°, -70°)
Axle oscillation	10.16 cm	4 in
Drive speed - stowed	7.2 km/h	4.47 mph
Gradeability**	45%	24.23°
Inside turning radius	2.00 m	6 ft 7 in
Outside turning radius	5.00 m	16 ft 5 in
Controls	proportional	proportional
Drive	four wheel	four wheel
Tyres - foam-filled lug NHS	33x15.50-16.5	33x15.50-16.5
Wheel load maximum***	3,583 kg	7,899 lb
Maximum ground bearing pressure***	4.57 kg/cm <sup>2</sup> (448 kPa)	65 psi

POWER		
Power source	Deutz D2011L03 diesel 36.4 kW (49 hp)	
Hydraulic tank capacity	102.2 L	27 gal lqd
Fuel tank capacity	64.3 L	17 gal lqd
Auxiliary power	12 V pump	12 V pump
Genset	5.5 kVA Miller	5.5 kVA Miller

WEIGHT****		
	7,190 kg	15,851 lb



## JLG 450AJ SII ..... RANGE OF MOTION



\*The metric equivalent of working height adds 2 m to platform height. Imperial adds 6 ft to platform height.

\*\*Gradeability applies to driving on slopes. See operator's manual for details regarding slope rating.

\*\*\*Floor loading information is approximate. It should be used only with adequate safety factors.

\*\*\*\*Weight will vary depending on options.